

THE
MASTER OF
ADVENTURE



V-STRUM 1050 DIE
V-STRUM 1050



V-STROM 1050 DFE

FOR WHEREVER YOUR JOURNEY TAKES YOU

Conquer new terrain, explore new horizons and experience new adventures.

A new 21" front wheel, switchable ABS, longer travel suspension and substantial ground clearance provide true off-road ability. Bespoke ergonomics, electronic rider aids, cruise control, bi-directional quickshifter and full-colour TFT display offer long-haul comfort, confidence and excitement on every journey.



Bike shown features optional accessories.

V-STROM 1050

FOR WHEREVER YOUR JOURNEY TAKES YOU

Whether you're chasing the sunset across Europe or taking the long route home, the new V-Strom 1050 is the perfect choice whatever your adventure. The characterful V-Twin engine and precise chassis deliver thrilling performance. Its comfortable and commanding riding position combined with advanced electronic rider aids make it the ideal partner for your next adventure.

Suzuki Intelligent Ride System (SIRS)

Suzuki's robust collection of our latest electronic systems were developed to assist and help you optimise performance characteristics to match your changing riding needs and preferences. By making the V-STROM models feel more controllable, predictable and less tiring to operate, these systems help you ride with greater confidence and peace of mind, whether touring for long distances, carrying gear, or leaving paved roads behind to explore rural trails.

6-axis IMU

Integrating accelerometers and gyroscopes into a single compact package, the 6-axis Bosch IMU measures angular rate and acceleration to constantly monitor pitch, roll, and yaw movement. This helps realise several of the latest SIRS electronic control systems.



G (Gravel) mode (V-STROM 1050DE only)

In addition to the 3 existing traction control modes, and off, the V-STROM 1050DE features a new gravel mode setting that retards ignition timing and allows a limited amount of slip when riding on unpaved surfaces to help the rider better negotiate gravel roads.

Note: Because G (Gravel) mode allows a certain amount of rear tyre slip, it is not suitable for use on paved surfaces.

Switch off rear ABS (V-STROM 1050DE only)

The V-STROM 1050DE adds the ability to switch off rear ABS for improved controllability on gravel and other unpaved surfaces.

Note: ABS is not designed to shorten the braking distance. Please always ride at a safe speed for road and weather conditions, including while cornering.



Suzuki Traction Control System (STCS)

Designed to help prevent the rear wheel from slipping, this system reduces stress and fatigue while instilling greater confidence in controlling your ride. You can select from 3 modes to control how quickly the system takes effect and how proactive it is in limiting wheel spin, or you can opt to run with it turned off.

Note: The traction control system is not a substitute for the rider's throttle control. It cannot prevent loss of traction due to excessive speed when the rider enters a turn and/or applies the brakes. Neither can it prevent the front wheel from losing grip.



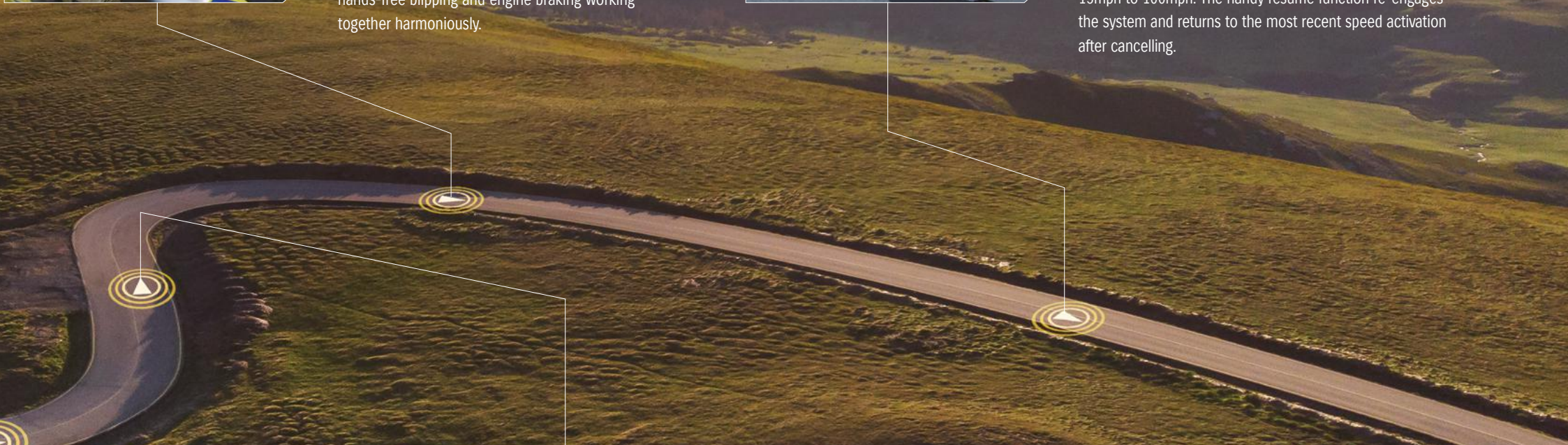
Bi-directional Quick Shift System

This standard-equipment feature lets you shift up or down without operating the clutch lever. When activated, the system delivers clean, silky smooth upshifts with uninterrupted acceleration. Downshifts are also quick and smooth, thanks in part to automatic hands-free blipping and engine braking working together harmoniously.



Cruise Control System

Cruise control reduces fatigue when travelling long distances at constant speeds by letting you maintain a set speed without operating the throttle. The system now allows activation when riding in 2nd gear or higher at engine speeds between 2,000rpm and 7,000rpm, which translates to vehicle speeds of roughly 15mph to 100mph. The handy resume function re-engages the system and returns to the most recent speed activation after cancelling.



Motion Track Brake System

Vehicle posture data from the IMU is combined with front and rear wheel speed sensor data to allow ABS activation, even when leaning into corners. This helps maintain traction and lean angle so you can better trace your intended line through the corner. ABS mode 1 provides minimal intervention, while ABS mode 2 intervenes more proactively.

Note: ABS is not designed to shorten the braking distance. Please always ride at a safe speed for road and weather conditions, including while cornering.

Suzuki Intelligent Ride System (SIRS)

Suzuki Drive Mode Selector (SDMS)

Choose between three different power output characteristic modes to best match varying riding conditions or your preferences. While all three ultimately deliver maximum engine output, finer control over the level of throttle response and torque characteristics when accelerating empowers you to ride with greater confidence and pleasure.



Hill Hold Control System

This system automatically engages the rear brake for 30 seconds after coming to a stop while facing uphill on an incline, even when you release the brake lever or pedal. This helps ensure a smoother restart free of worries that the bike will roll backward.



Load Dependent Control System

This system recognises changes in the load conditions of any given moment and responds by automatically adjusting brake pressure to provide stable braking regardless of the load you are carrying.



Slope Dependent Control System

While constantly monitoring the motorcycle's posture and angle, the system controls brake pressure to prevent rear wheel lift and help achieve confident braking, even riding downhill.

Ride-by-wire Electronic Throttle System

This cable-free system leverages the onboard ECM to finely control the relationship between throttle action and engine output characteristics. Individual settings are tuned to match each of the SDMS modes and throttle grip action is optimised, particularly when first opening the throttle, to improve controllability, especially when riding on gravel roads.

Suzuki Easy Start System

One quick press of a button lets you start the engine without pulling in the clutch lever. As a function used on every outing, Easy Start makes your riding experience more convenient.

Low RPM Assist

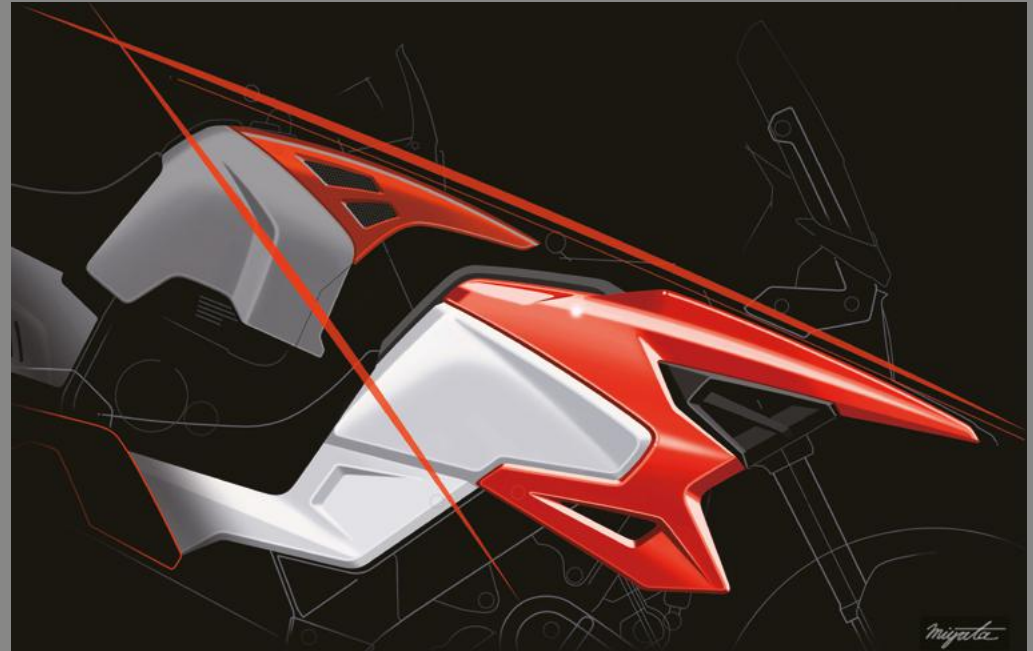
By helping maintain engine idle speed for smoother and easier starts, this function helps you operate and control the bike more easily in stop-and-go traffic.

Design Is In Our DNA

V-STROM 1050 DIE



V-STROM 1050



DR-Z Design History

The DR-Z800 desert racer made design history when Suzuki entered it in the 1988 Paris-Dakar Rally, introducing a unique new concept to the rally scene that remains popular with motorcycle enthusiasts today. The DR-Z was compact, light and tough as nails. One of its most striking design elements had to be the radical new design expression of the prominent “beak” out front. As evidenced by its modern interpretation of the “beak” design, the new V-STROM models remain true to this heritage.

Choose Your Adventure

V-STROM's compact, lightweight chassis is engineered to maximise agility, comfort, and utility. Every aspect reflects a focus on great handling and control in a wide range of real-world conditions, whether riding long distances on paved roads or heading down country trails. What results is the solid core strength needed to deliver high performance as an all-round adventure bike.

The new models offer you a choice, geared toward your preferences for pursuing different types of adventure activities. The V-STROM 1050 is engineered with a stronger focus on comfort and performance on-road especially when covering long distances, whereas the V-STROM 1050DE maintains the core qualities of the 1050 then also offers enhanced performance and control when exploring further, beyond paved roads and onto gravel and dirt trails.



Bike shown features optional luggage.



Proven Twin-Spar Aluminium Frame

The pursuit of building top-performing aluminium frames has been an integral part of Suzuki's engineering DNA for decades, and the frame for the V-STROM 1050DE and 1050 remains true to this heritage. It incorporates aluminium castings and extruded aluminium sections to lend the right amount of suppleness and strength to an overall rigid alloy structure. It also features updated seat rails that better support the input load from unpaved surfaces. The result is a trim, light and strong frame of tried and proven reliability that delivers excellent straight-line stability, handles brilliantly and is easy to manoeuvre, wherever your journey takes you.



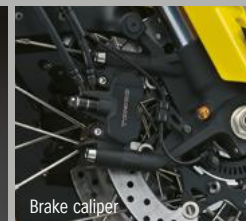
Front fork adjuster



Rear suspension adjuster



ABS unit



Brake caliper

Optimised Suspension

KYB inverted front forks with 43mm inner tubes deliver a smooth, controllable ride and feature stable damping characteristics well suited to adventure riding. Fully adjustable, they allow you to match settings to your preference or intended use. The link-type monoshock KYB rear suspension contributes to agility and stability, and its preload can be adjusted by simply turning the dial by hand.

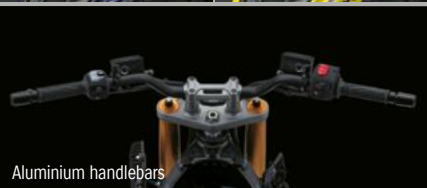
Reliable Stopping Power

A pair of Tokico radial mount monobloc callipers, each with four opposed pistons, act on 310mm floating-mount discs to provide sure stopping power in the front. These work in conjunction with the rear disc brakes as part of the ABS that helps prevent the wheels from locking up for more stable breaking.



Screen

The V-STROM 1050 screen's shape and size are designed to maximise comfort when touring for long distances. It features 50mm of vertical adjustment by using a quick release handle. The V-STROM 1050DE adopts a smaller smoke-tinted screen designed to maximise visibility on trails. Both screens were tested extensively to ensure they effectively cut wind noise and prevent buffeting for a more comfortable and less tiring riding experience.



Tapered Aluminium Handlebars

The tapered aluminium handlebars for both V-STROM'S are shaped to be comfortable to hold and engineered to offer the right degree of rigidity, optimal grip and width to provide positive control, whether riding on or off paved roads. The V-STROM 1050DE handlebars use thicker tubing and a softer grade aluminium so they flex just the right amount and better absorb bumps to make exciting runs on rough ground easier on your hands and arms. They also feature a 40mm wider grip that enhances controllability, particularly when standing on the pegs to negotiate rough surfaces.



Comfortable, Durable Seat

The V-STROM 1050 features an independent rider and pillion seat design that is both visually appealing and achieves the right level of firmness to provide plenty of comfort with less fatigue on long rides. The rider seat height can be raised 20mm using a riser kit included under the pillion seat.



The V-STROM 1050DE adopts a fixed-height seat design that reduces weight while also achieving greater rigidity. This durable seat better stands up to input load when riding on unpaved surfaces, as well as to weight shifts as you change position to master the terrain. Optional higher and lower seats are also available as Suzuki Genuine Accessories.



Wheels and Tyres with Purpose

The V-STROM 1050 rides on 10-spoke cast aluminium wheels shod with Bridgestone BATTAX ADVENTURE A41 radial tyres. The 110/80R19 front and 150/70R17 rear tyres contribute to agile handling and positive grip, whether the road surface is dry or wet. They provide a smooth ride and greater comfort when touring for long distances.



The V-STROM 1050DE takes advantage of wire-spoked wheels with aluminium rims to better endure the pounding when exploring trails and other rough surfaces. It also adopts a larger 21-inch front rim for greater stability and better control on gravel and flat dirt. Both wheels are shod with Dunlop TRAILMAX MIXTOUR tyres, which feature a semi-block tread pattern and custom-designed internal structure that deliver the solid traction and performance you want when exploring open trails.



Bike shown features optional luggage.

Any Terrain, Any Horizon, Any Adventure

The V-STROM 1050DE introduces a new package of features aimed specifically at maximising performance and control on gravel and flat dirt.

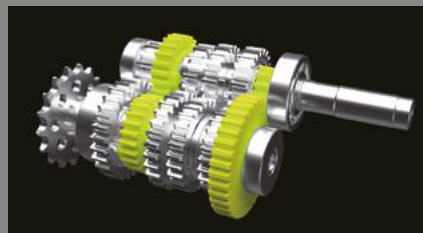
- Its dedicated chassis geometry is designed to deliver greater stability and controllability on gravel or flat dirt, while providing a comfortable riding position and well-balanced front/rear weight distribution. Features include a 40mm longer wheelbase, a 27° rake, 25mm taller ground clearance and a 20mm wider handlebar grip on each side.
- This custom chassis geometry includes a new 21-inch front wheel and longer version of the V-STROM's rugged aluminium swingarm for greater straight-line stability and better control when tearing up gravel roads.
- The suspension adopts a longer stroke, with 170mm of front and 169mm of rear travel. The suspension's spring rate, valve, and piston settings are custom-tuned for riding on unpaved surfaces.
- Its trail-ready gear includes as standard a stronger drive chain, an aluminium sump guard, a steel engine protections bars and wide steel footpegs designed for greater stability when standing while riding.

Powerful V-Twin Engine

Suzuki's 1,037cc four-stroke, 90° V-Twin DOHC engine features strong linear torque in the mid rpm range, and a free-revving nature that maximises power output in the high rpm range. There is also a palpable pleasure to its distinctive V-Twin rumble and exhaust note. Its V-Twin layout also allows for a slimmer chassis design with a lower centre of gravity, and this contributes to agile handling and greater manoeuvrability.



Bike shown features optional accessories.



Transmission

The six-speed transmission features updated gear ratios. The new ratio for first gear makes shifting from first through fifth gears smoother, makes acceleration faster, and improves controllability. Sixth gear was also updated to make riding at highway speeds more comfortable and enjoyable. The new ratios also contribute to smooth operation of the Bi-directional Quick Shift System.



Suzuki Clutch Assist System (SCAS)

SCAS delivers smooth operation and a light touch to clutch lever operation that helps reduce left hand fatigue. At the same time, it ensures positive power transfer when accelerating and smoother deceleration when downshifting, advantages it also brings to the new Bi-directional Quick Shift System as well.



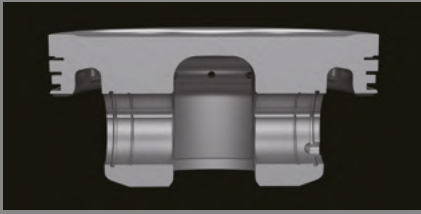
Suzuki Dual Spark Technology

Each cylinder utilises two iridium spark plugs. The primary plug fires throughout the engine's rpm range, while the secondary plug helps improve combustion efficiency and power delivery at low rpm. This technology also contributes to linear throttle response and stable idle.



Sodium-filled Exhaust Valves

Hollow sodium-filled exhaust valves help reduce the temperature in the combustion chamber. This not only results in better loading efficiency and a better feeling to engine operation, it also contributes to improving the durability of the valves.



Forged Pistons

The V-Twin engine uses highly-rigid, lightweight forged pistons. The heads are anodized and conical machining inside the wrist pin holes transfer load and mitigate stress transferred to the crowns. Both these treatments contribute to enhanced durability.



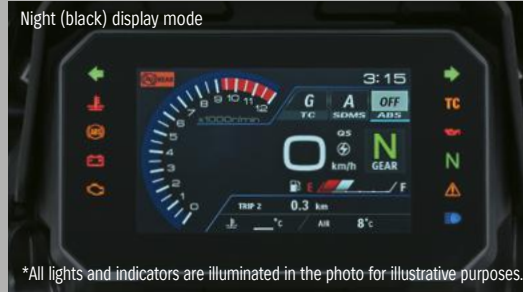
Electronic Throttle Bodies

Each of the two cylinders is fed by independent 49mm large bore electronic-controlled throttle bodies. The butterfly valve of each throttle body is opened and closed independently to achieve more precise throttle control and help realise more stable idling.



Tuned Exhaust System

The 2-into-1 exhaust system produces a pleasing note that befits the V-Twin engine. Better yet, the high-efficiency catalytic converter inside the collector helps comply with Euro 5 emission standards, while at the same time maximising power output and overall performance.



blinks when the engine reaches a preset speed, and the screen now adds a function that lets you display large pop-up alerts and warnings. Manual or automatic switching settings for the day (white) and night (black) display modes let you maximise visibility at any hour and in any riding situation.

Intuitive Handlebar Switches



each SIRS systems by simply operating the MODE and UP/DOWN switches on the left handlebar. In addition, you can quickly engage cruise control using a dedicated button on the right handlebar switch.

Colour TFT Display

The V-STROM models adopt a custom new 5-inch colour TFT display that features clearly legible information displays. High-quality displays keep you fully aware of all the bike's systems and settings, and supply vital real-time operating status information. The tachometer does double duty as a programmable rpm indicator light that



USB Port and 12V DC Outlet

A USB port built into the left side of the colour TFT display lets you recharge your smartphone. There is also a 12V DC outlet under the seat that can be used to charge or power a variety of devices.

- Using the USB port while the engine is idling or stopped may drain the battery. Be aware of battery drain when using the USB port.
- Failure to observe the following items when handling the USB port may result in damage to the motorcycle or connected devices.
- Do not connect any electronic device other than a mobile phone.
- Do not use when washing the motorcycle or when it is raining.
- Reattach the cap when the port is not in use.

LED Lighting

Vertically stacked rectangular LED headlights provide you with a clear view of the road ahead, while at the same time adding stylish flair to the face of the V-STROM models. Compact LED position lights, LED indicators and LED rear light ensure clear visibility and practical durability.



SUZUKI GENUINE ACCESSORIES

V-STRON 1050 DE
V-STRON 1050





ACCESSORIES LIST

1	Low seat	22	Tank bag (Large)
2	High seat	23	Tank bag (Small)
3	Grip heater	24	Ring for tank bag
4	Screen adjust kit	25	Aluminium chain guard
5	High Screen	26	Mirror extension Spacer set for mirror extension
6	Plastic top case 35L	27	Side stand extension plate
7	Top case carrier set	28	LED fog lamp set / Clamp / Shroud
8	Plastic side case set	29	Aluminium skid plate (Black)
9	Side case lower bracket	30	Aluminium skid plate (Silver)
10	Cushion pad for top case 35L	31	Large footrest
11	Lock set	32	Fuel tank pad
12	Plastic top case 56L	33	Fuel tank protection foil (Transparent)
13	Top case carrier set	34	Side cover protection foil
14	Aluminium top case (Silver/38L)	35	Heel plate protection foil
15	Aluminium top case (Black/38L)	36	Rim decals (Rear)
16	Top case carrier set	37	Rim decals (Front)
17	Aluminium side case set (Silver)	38	Fuel cap protection sticker
18	Aluminium side case set (Black)	39	Frame cover protection sticker
19	Side case bracket	40	Sticker set SUZUKI
20	Lock set		
21	Accessory bar		

1 Grey/Black



1 Blue/Black



2 Grey/Black



2 Blue/Black



1 Low seat

45100-06L60-B03 / 45100-06L60-CGL V-STROM 1050DE

45100-06L51-B03 / 45100-06L51-B1H V-STROM 1050

For those who want a lower seat, this accessory replaces the original-equipment seat with one that is 30mm lower. Two colours available:

V-STROM 1050DE 45100-06L60-B03 Grey/Black 45100-06L60-CGL Blue/Black

V-STROM 1050 45100-06L51-B03 Grey/Black 45100-06L51-B1H Blue/Grey

*Picture shown is for V-STROM 1050DE



2 High seat

45100-06L70-B03 / 45100-06L70-CGL V-STROM 1050DE

For those who want a higher seat, this accessory replaces the original-equipment seat with one that is 30mm higher.

Two colours available

45100-06L70-B03 Grey/Black

45100-06L70-CGL Blue/Black

3 Grip heater

57100-06830-000 V-STROM 1050DE

57100-06823-000 V-STROM 1050

Heats the entire surface of the grips and offers three different level settings to keep hands warm when riding in cold weather.

4 Screen adjust kit

48400-06810-000 V-STROM 1050DE

This allows the rider to adjust the high screen to different height positions depending on riding conditions (extendable up to 50mm/11 different positions).

In combination with high screen.(p/n 48400-06820-000).

5 High screen

48400-06820-000 V-STROM 1050DE

This optional high screen is designed to offer a significantly higher level of wind protection that enhances comfort on long rides. (80mm taller than the standard screen).

6 Plastic top case 35L

93300-31831-000 V-STROM 1050DE V-STROM 1050

Gives a typical V-STROM look with a plastic 35L top case, with one-key system using the ignition key for locking/unlocking.

Maximum load 5kg and case capacity 35L.

Please use this item in the speed less than 130km/h.

In combination with carrier plate (p/n 93900-31830-000) and lock set (p/n 95700-48810-000/95700-48820-000).



7 Top case carrier set

93900-31830-000 **V-STROM 1050DE** **V-STROM 1050**
Top case carrier set is designed only for installing plastic top case 35L. (p/n 93300-31831-000)
Do not use for other purpose.



8 Plastic side case set

93100-31841-000 **V-STROM 1050DE** **V-STROM 1050**
Uses one-key system with the ignition key for locking/unlocking. Maximum load 5kg each and case capacity 26L (right) and 29L (left). Please use this item in the speed less than 130km/h. In combination with bracket (p/n 93700-31840-000) and lock set (p/n 95700-48810-000/95700-48820-000).



9 Side case lower bracket

93700-31840-000 **V-STROM 1050DE** **V-STROM 1050**
Required for installing plastic side case set. (p/n 93100-31841-000).



10 Cushion pad for top case 35L

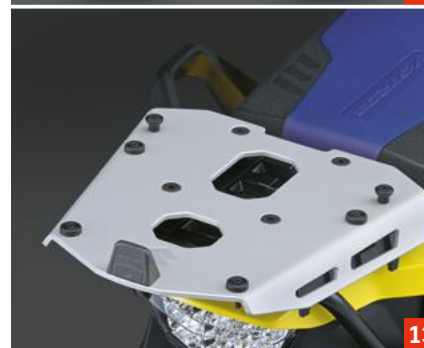
990D0-TC25L-005 **V-STROM 1050DE** **V-STROM 1050**
Improves riding comfort for the passenger. To be installed on plastic top case 35L (p/n 93300-31831-000).



11



12



13



14

11 Lock set

95700-48810-000 **V-STROM 1050DE** **V-STROM 1050**
95700-48820-000 **V-STROM 1050DE** **V-STROM 1050**
In combination with plastic top case 35L (p/n 93300-31831-000) and plastic side case (p/n 93100-31841-000).
Two sets
95700-48810-000
One set
95700-48820-000

12 Plastic top case 56L

99140-00A00-000 **V-STROM 1050DE** **V-STROM 1050**
Plastic top case with embossed S logo. Lock and key included. Cannot be used with side case set (p/n 93100-31841-000) Maximum load 3kg and case capacity 56L. Please use this item in the speed less than 130km/h. In combination with carrier plate (p/n 990D0-06L00-060).

13 Top case carrier set

990D0-06L00-060 **V-STROM 1050DE** **V-STROM 1050**
Top case carrier set is designed only for installing plastic top case 56L (p/n 99140-00A00-000).
Do not use for other purpose.

14 Aluminium top case (Silver/38L)

990D0-ALTC1-038 **V-STROM 1050DE** **V-STROM 1050**
Aluminium top case embossed with Suzuki logo. Maximum load 3kg and case capacity 38L. Please use this item in the speed less than 130km/h. Two colours available
Silver: Anodised
Black: Powder coated.
In combination with carrier plate (p/n 990D0-06L01-060) 2 locks required (p/n 9914A-00A00-002).



15



16



15 Aluminium top case (Black/38L)

990D0-ALTC2-038 V-STROM 1050DE V-STROM 1050

Aluminium top case embossed with Suzuki logo. Maximum load 3kg and case capacity 38L. Please use item in the speed less than 130km/h. Two colours available Silver: Anodised Black: Powder coated. In combination with carrier plate (p/n 990D0-06L01-060) 2 locks required (p/n 9914A-00A00-002).

16 Top case carrier set

990D0-06L01-060 V-STROM 1050DE V-STROM 1050

Top case carrier set is designed only for installing aluminium top case (p/n 990D0-ALTC1-038/990D0-ALTC2-038). Do not use for other purpose.



17 Aluminium side case set (Silver)

990D0-ALSC1-037 **V-STROM 1050DE** **V-STROM 1050**

18 Aluminium side case set (Black)

990D0-ALSC2-037 **V-STROM 1050DE** **V-STROM 1050**

Aluminium side case embossed with Suzuki logo. Maximum load 3kg and case capacity 37L each. Please use this item in the speed less than 130km/h. Two colours available: Silver: Anodised, Black: Powder Coated In combination with bracket (p/n 990D0-06L01-065/99147-06L00-ALU) Locks are required (p/n 9914A-00A00-006 / 9914A-00A00-002)



19 Side case bracket

99147-06L00-ALU **V-STROM 1050DE**
990D0-06L01-065 **V-STROM 1050**

Required for installation of aluminium side case set. (p/n 990D0-ALSC1-037/990D0-ALSC2-037)



20 Lock set

9914A-00A00-006 **V-STROM 1050DE** **V-STROM 1050**
9914A-00A00-002 **V-STROM 1050DE** **V-STROM 1050**

Locks and key set for installation of aluminium top case (p/n 990D0-ALTC1-038/990D0-ALTC2-038) and aluminium side case (p/n 990D0-ALSC1-037/990D0-ALSC2-037). 6 sets (p/n 9914A-00A00-006) 2 sets (p/n 9914A-00A00-002)



21 Accessory bar

990D0-06L00-030 **V-STROM 1050**

Black powder coated bars protect the engine while fitting in with the style of the V-STROM and provides a mounting point for other accessories. Required for installing LED fog lamp (p/n 99000-990D2-220/99000-990D2-221) and skid plate (p/n 990D0-31J00-040/990D0-31J00-041).



22 Tank bag (Large)

990D0-04600-000 **V-STROM 1050DE** **V-STROM 1050**

Durable nylon material with reflective piping. It has a capacity of 11L expandable to 15L, rain cover and shoulder belt included. Maximum load: 2.5kg. Please use this item in the speed less than 130km/h. In combination with ring for tank bag (p/n 99148-00A200-000).



23 Tank bag (Small)

990D0-04300-000 **V-STROM 1050DE** **V-STROM 1050**

Durable nylon material with reflective piping, volume 5L expandable to 9L, rain cover and shoulder belt included. Maximum load: 2.5kg. Please use this item in the speed less than 130km/h. In combination with ring for tank bag (p/n 99148-00A20-000).





24 Ring for tank bag

99148-00A20-000 **V-STROM 1050DE** **V-STROM 1050**

Required for installing tank bag.
(p/n 990D0-04600-000/990D0-04300-000)



25 Aluminium chain guard

99112-06L00-ALU **V-STROM 1050DE**

990D0-06L10-ALU **V-STROM 1050**

Matt black coated/silver aluminium chain guard with V-STROM logo.
Replacement of the original-equipment chain guard.



26 Mirror extension

990D0-11JME-010 **V-STROM 1050DE** **V-STROM 1050**

Spacer set for the mirror extension

990D0-06LME-010 **V-STROM 1050DE** **V-STROM 1050**

To improve rear visibility, the mirror can be raised 51mm higher than standard and is adjustable up to 40mm sideways.
Spacer set required for installation. (p/n 990D0-06LME-010)



27 Side stand extension plate

990D0-06L20-000 **V-STROM 1050**

Adds stability when parking and provides another look with V-STROM logo.



28 LED fog lamp set

99000-990D2-220 **V-STROM 1050DE** **V-STROM 1050**

Clamp

990D0-31J30-000 **V-STROM 1050DE** **V-STROM 1050**

Shroud

990D0-31J35-000 **V-STROM 1050DE** **V-STROM 1050**

Bright LED fog lamps are attached to the accessory bar.
In combination with accessory bar (p/n 990D0-06L00-030)



29 Aluminium skid plate (Black)

990D0-31J00-040 **V-STROM 1050**

A tough-looking plate with Suzuki logo.
Available in a choice of Black or Silver.
In combination with accessory bar (p/n 990D0-06L00-030).



30 Aluminium skid plate (Silver)

990D0-31J00-041 **V-STROM 1050**

A tough-looking plate with Suzuki logo.
Available in a choice of Black or Silver.
In combination with accessory bar (p/n 990D0-06L00-030).



31 Large footrest

99162-06L00-000 **V-STROM 1050DE**

990D0-06L10-000 **V-STROM 1050**

Improves riding comfort and adjustable up to 10mm in front and back. 3 positions with height up to 20mm.

*Picture shown is for V-STROM 1050



32 Fuel tank pad

990D0-06L01-PAD **V-STROM 1050DE** **V-STROM 1050**

For tank cover scratch protection, featuring V-STROM logo.



33



34



35

33 Fuel tank protection foil (Transparent)

990D0-06L02-PAD **V-STROM 1050DE** **V-STROM 1050**

Protects against tank scratches.

34 Side cover protection foil

990D0-06L03-PAD **V-STROM 1050DE** **V-STROM 1050**

Protects side frame cover from scratches.

35 Heel plate protection foil

990D0-06L04-PAD **V-STROM 1050DE** **V-STROM 1050**

Protects heel plate from scratches.



36 Red



37 Red

36 Rim decals (Rear)

990D0-06LRW-RED **V-STROM 1050**

990D0-06LRW-GRY **V-STROM 1050**

These decals provide a more stand-out look to your V-STROM from the plainer standard equipment. Set of 6 decals per wheel.

37 Rim decals (Front)

990D0-06LFW-RED **V-STROM 1050**

990D0-06LFW-GRY **V-STROM 1050**

These decals provide a more stand-out look to your V-STROM from the plainer standard equipment. Set of 6 decals per wheel.



38

39

38 Fuel cap protection sticker

990D0-17K04-BLK **V-STROM 1050DE** **V-STROM 1050**

Protection from scratches on fuel cap.
Not in combination with ring for tank bag
(p/n 99148-00A20-000).

39 Frame cover protection sticker

990D0-31J01-PAD **V-STROM 1050DE** **V-STROM 1050**

Protects frame cover from scratches.



40

40 Sticker set striking SUZUKI branding

990D0-11J05-PAD **V-STROM 1050DE** **V-STROM 1050**

Adds striking SUZUKI branding to the standard finish of the front suspension forks.

Any Terrain. Any Horizon. Any Adventure.



V-STROM 1050DE



Champion Yellow No.2 / Metallic Matt Sword Silver (CD8)



Pearl Vigor Blue / Pearl Brilliant White (JWN)



Glass Sparkle Black / Metallic Matt Black No.2 (KGL)

V-STROM 1050



Metallic Reflective Blue / Metallic Matt Black No.2 (CGG)



Candy Daring Red / Metallic Matt Black No.2 (BNR)



Glass Mat Mechanical Grey / Metallic Matt Black No.2 (CB8)



Glass Sparkle Black / Metallic Matt Black No.2 (KGL)

Specifications

	V-STROM 1050DE	V-STROM 1050
Overall length	2,390mm (94.1in.)	2,265mm (89.2in.)
Overall width	960mm (37.8in.)	940mm (37.0in.)
Overall height	1,505mm (59.3in.)	1,515mm (59.6in.)
Wheelbase	1,595mm (62.8in.)	1,555mm (61.2in.)
Ground clearance	190mm (7.5in.)	165mm (6.5in.)
Seat height	880mm (34.6in.)	855mm (33.7in.)
Kerb mass	252kg (554lbs)	242kg (534lbs)
Engine type	4-stroke, liquid-cooled, DOHC, 90° V-Twin	
Bore x stroke	100.0mm x 66.0mm (3.937in. x 2.598in.)	
Engine displacement	1,037cc (63.3cu.in)	
Peak power	107PS (79kW) @ 8,500RPM	
Peak torque	100Nm @ 6,000RPM	
Fuel efficiency / range	54.2MPG / 238 Miles	
CO ₂	115g/km	
Compression ratio	11.5:1	
Fuel system	Fuel injection	
Starter system	Electric	
Lubrication system	Wet sump	
Transmission	6-speed constant mesh	
Suspension Front	Inverted telescopic, coil spring, oil damped	
Suspension Rear	Link type, coil spring, oil damped	
Rake / trail	27° / 126mm (4.96in)	25° / 110mm (4.33in)
Brakes Front	Disc, twin	
Brakes Rear	Disc	
Tyres Front	90/90-21M/C 54H tube type	110/80R19M/C 59V tubeless
Tyres Rear	150/70R17M/C 69H tubeless	150/70R17M/C 69V tubeless
Ignition system	Electronic ignition (transistorised)	
Fuel tank capacity	20.0L (4.4 Imp gal)	

Specifications, appearance, colours, (including body colour), equipment, materials and other aspects

of the "SUZUKI" products shown in the brochure are subject to change by Suzuki at any time without notice, and they may vary depending on local conditions or requirements. Some models are not available in some territories. Each model may be discontinued without notice. Please enquire at your local dealer for details of any such changes. All images of professional riders in controlled conditions.

- Always wear a helmet, eye protection and protective clothing.
- Enjoy riding safety.
- Read your Owner's Manual carefully.
- Never ride under the influence of alcohol or other drugs.

To find your nearest Dealer visit bikes.suzuki.co.uk

f t i y /SuzukiBikesUK

